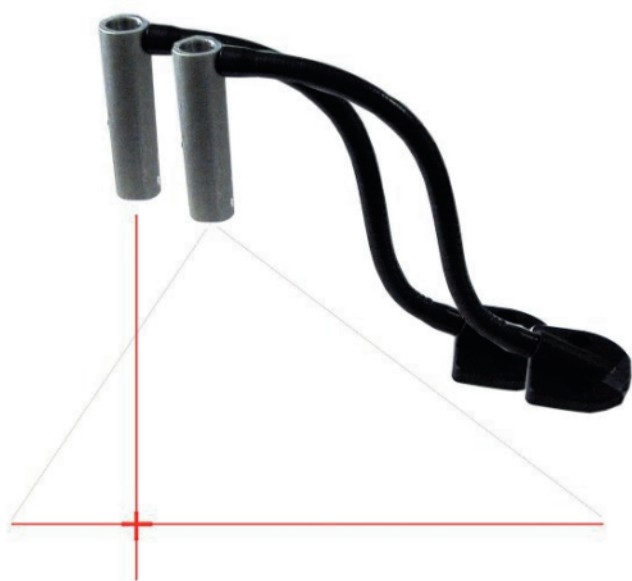


LASER POINTER KIT



FEATURES

Indicator lights for positioning fabrics on printing tables.

Each of the two devices emits a line-shaped light beam with a central point on the surface on which the device is pointed.

It can be oriented in different ways, to cross the two luminous lines as required. They emit a high intensity red ray which makes it visible also on dark coloured fabrics.

Fabrics can be positioned with extreme accuracy on the pallet.

It is not necessary to mark the pallet with marking pens.

Extremely safe, does not cause fatigue or damage to the eyes.

Available with different shaped lines and points to suit all needs.

TECHNICAL DATA

VALUES

POWER SUPPLY	3.2 V DC with 110 / 230 V transformer
POINTER DIAMETER	18 mm
POINTER LENGTH	60 mm
NUMBER OF POINTERS	2
POWER SUPPLY POWER INPUT (max)	5 W
POWER SUPPLY CABLE LENGTH	1.5 m
LASER POWER	3 mW