

MANUAL PRINTING MACHINE WITH MICROREGISTRATION



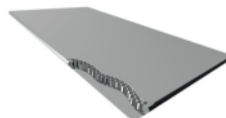
OPTIONAL ACCESSORIES



SPOT EASY

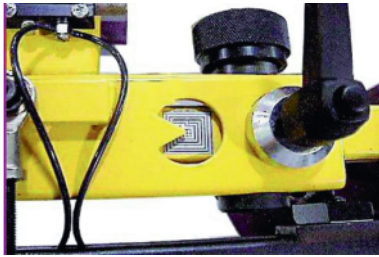


YO-YO

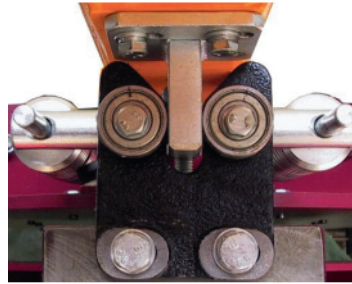


SAGOME ALLUPLAN

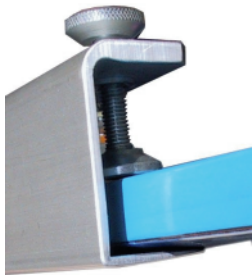




Precise and sure Microregulations to position the frame respect to the machine.



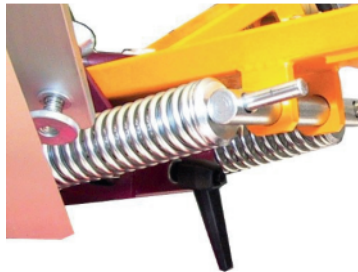
Reposition device of Violet arm



Manual frames locking system on Violet



Violet proprietary connection



Lifting spring regulation of frameholder

FEATURES

The Violet printing machine has a sturdy, heavy structure.

It has a lateral frames fixing system.

Quick and easy printing tables changeover.

The aluminium tables are 450x550 mm and are covered with Rubberprint for even manual pressure.

The maximum frame width that can be used is 680 mm

Adjustment to about 30 mm of "off-contact" is possible and, at the same time, the frame tilt can be modified to keep it parallel to the printing table.

The frame fixing system is so constructed as to reduce to the minimum the distance between the frame-lock and the printing table

The micro-registrations can be adjusted easily on the x-y axis thanks to an extremely useful and accurate sighting device.

The printing heads are centred on the aluminium tables by means of a rotary bearing inserted in a fork.

The springs which raise the screens can be adjusted to support even the heaviest systems.

ADVANTAGES

This is a manual machine which most resembles the features of automatic carousels.

MODEL	VIOLET 6/6	VIOLET 8/8
NUMBER OF COLOURS	6	8
NUMBER OF STATIONS	6	8
MACHINE DIAMETER	2.90 m	3.20 m