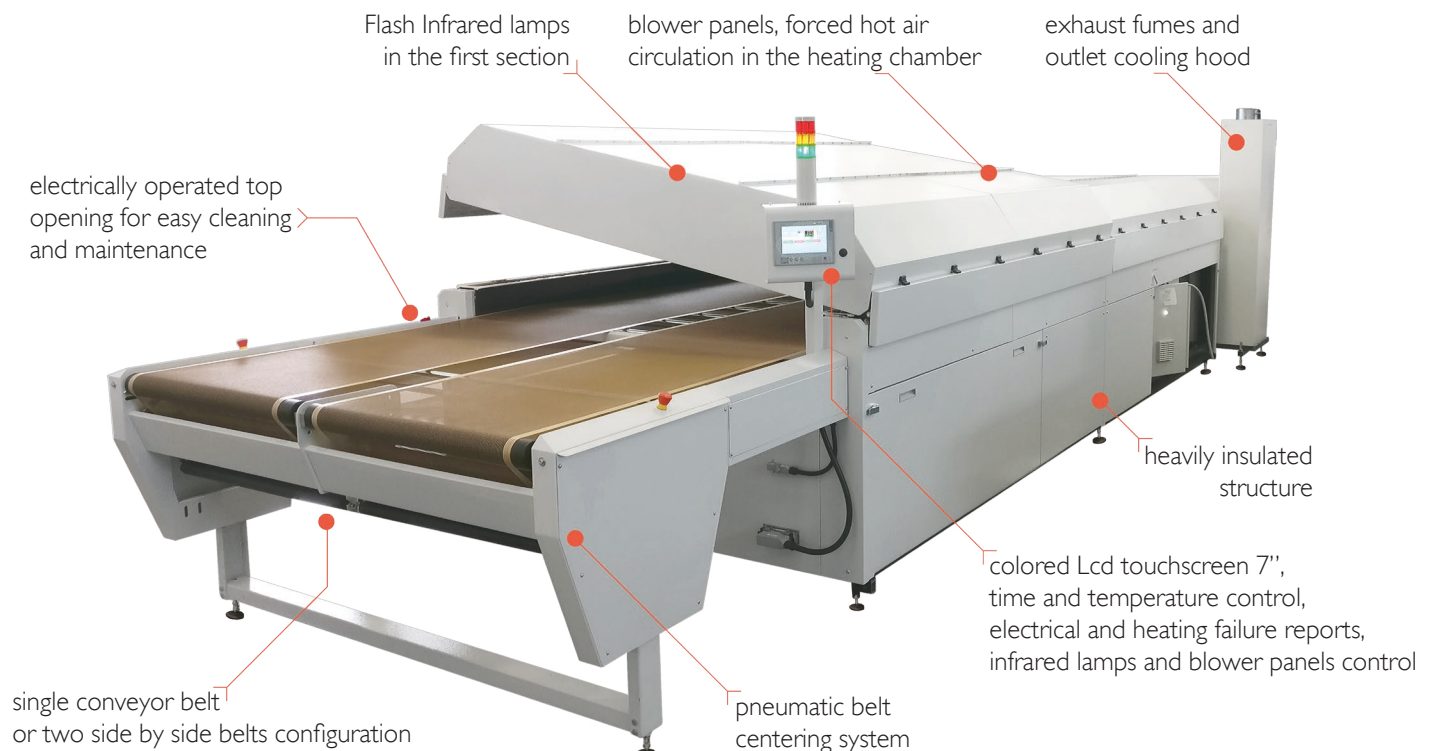




## Forced hot Air Gas Dryers



## Features

“Griff” is the tunnel dryer with the highest air circulation of its kind. The gas heating has been chosen to reduce energy costs.

- It is designed to dry and cure fabrics printed with digital printers using water-based inks.
- The hot air circulation is particularly accurate and use reversed blades fans, with high efficiency and low noise.
- The air exchange is calibrated to expel water vapor and combustion fumes and facilitate drying.
- The outflow nozzles send the air onto the product in a perpendicular and high speed way.
- The temperature is regulated by a precision thermostat that drives a modulating premixed burner.
- The flame is then always present and its intensity varies in function of power demand.
- The passage height is 130 mm, sufficient for the vast majority of products.
- The two independent belt speeds version can dry simultaneously two products with different needs.
- It is possible to lift the upper section electronically to easily perform the internal cleaning of the dryer.

## Optionals

- Inlet and outlet extensions
- IR heating with flash lamps in the first meter of the heating chamber



Exhaust fumes and outlet cooling hood



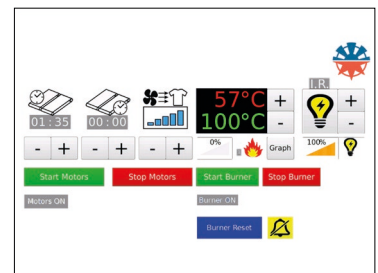
Infrared Lamps and upper section opening

## Advantages

- new interactive interface
- combined drying system
- high speed hot air circulation
- powerful airflow specifically designed for DTG
  - precise time and temperature control
  - low consumption and efficient burner
  - optional flash infrared lamps



Single belt configuration



Griff PLC interface

Other models and configurations are available

TECHNICAL DATA	GRIFF 4140	GRIFF 5180
Electrical Requirements	400V 3P+N+PE 4,8 A	400V 3P+N+PE 5,1 A
Exhaust Specification	1500 m <sup>3</sup> /h Ø 200 mm	1500 m <sup>3</sup> /h Ø 200 mm
Max Temperature	200°C	200°C
Power Consumption (max)	2,5 kw	3,2 kw
Belt Width [mm]	1440	1800 or 2x900
Chamber Length [mm]	4000	5560
Production*	600 pieces/h	800 pieces/h
Dimension**(LxWxH)[mm]	6976x2150x2033	8665x2250x2100
Shipping Weight	1800 kg	2000 kg
* Production of T-shirts with A4 print size - 3 minutes curing time		
** Dimension can change accordingly to entry or exit opening extensions		