

Designed and Manufactured 100% in Italy

Complete Brochure



Textile Drying Solutions

Screen Printing

DTG Printing

Textile Accessories

Chiossi e Cavazzuti s.r.l. has grown up over 39 years of experience in the manufacturing of automated machinery.

The technological expertise that the Company has built up over years of research, closely tied to its international manufacturing and distribution activities, is the best guarantee of quality that Chiossi e Cavazzuti can provide.

Thanks to our good references on the market we reached numerous important and exclusive trade agreements with most of the producers of printing machines.

Chiossi e Cavazzuti's drying Systems guarantee very high quality and low consumption of curing processes. We have been constantly keeping our objectives of Quality and Reliability, creating functional products designed in compliance with the latest safety and environments standards.

Even today we perform technical assistance to machines that have been produced more than 30 years ago, witnessing its structural solidity and longevity.



Contents

DTG Printing Dryers

<i>Tetris Dryers</i>	04
<i>Dido and Dido Shop</i>	06
<i>Griff Dryers</i>	08

Screen Printing Dryers

<i>Fahrenheit Dryers</i>	10
<i>Noir Dryers</i>	12
<i>Piccolo</i>	14

Flash Cures

<i>Yo-Yo, Spot Easy, Magic</i>	16
--------------------------------	----

Accessories for Textile

<i>Speedy-T</i>	18
<i>Printing Tables</i>	20

About Us

<i>History of the Company</i>	22
-------------------------------	----



Electric, Forced hot Air, Modular Dryers



Optionals

- Multiple conveyor belt configurations
- Inlet and outlet extensions
- Outlet cooling system



• Single conveyor belt

Standard configuration



• Double conveyor belt

Cure with different time simultaneously
Available on 1200 and 1900 models



• Returning conveyor belt

Load and unload in the same position
Standard on Ace 600 and Ace 950
Available on all models

Configurations

Heating Chamber Length: from 2 to 4, 6 or 8 meters

Conveyor Belt Width: 600 - 950 - 1200 - 1900 mm

Ace 600

Curing Area: 2000x600 mm

Power: 9,5 kW

Production: 100 pieces/h



Ace 950

Curing Area: 2000x950 mm

Power: 14 kW

Production: 190 pieces/h



Dual 1200

Curing Area: 2000x1200 mm

Power: 19 kW

Production: 280 pieces/h



Tandem 950

Curing Area: 4000x950 mm

Power: 28 kW

Production: 380 pieces/h



Poker 1200

Curing Area: 4000x1200 mm

Power: 39 kW

Production: 560 pieces/h



Poker 1900

Curing Area: 4000x1900 mm

Power: 57 kW

Production: 960 pieces/h



Other configurations and models available: Dual 1900 (Curing Area: 2000x1900mm), Tris 950 (Curing Area: 6000x950mm), Tetris more than 8 meters, etc

TECHNICAL DATA	ACE 950	DUAL 1200	TANDEM 950	POKER 1900
Electrical Requirements	400V 3P+PE 20A	400V 3P+PE 29A	400V 3P+PE 42A	400V 3P+PE 90A
Exhaust Specification	180 m³/h Ø 150 mm	180 m³/h Ø 150 mm	360 m³/h Ø 150 mm	360 m³/h Ø 150 mm
Max Temperature	200°C	200°C	200°C	200°C
Power Consumption (max)	14 kw	19 kw	28 kw	57 kw
Belt Width [mm]	950	1200	950	1900
Chamber Length [mm]	2000	2000	4000	4000
Production ¹	190 pieces/h	280 pieces/h	380 pieces/h	960 pieces/h
Dimension ² (LxWxH)[mm]	3800x1250x2250	4100x1500x2250	5800x1250x2250	6100x2200x2250
Shipping Weight	650 kg	780 kg	950 kg	2200 kg

¹ Production of T-shirts with A4 print size - 3 minutes curing time

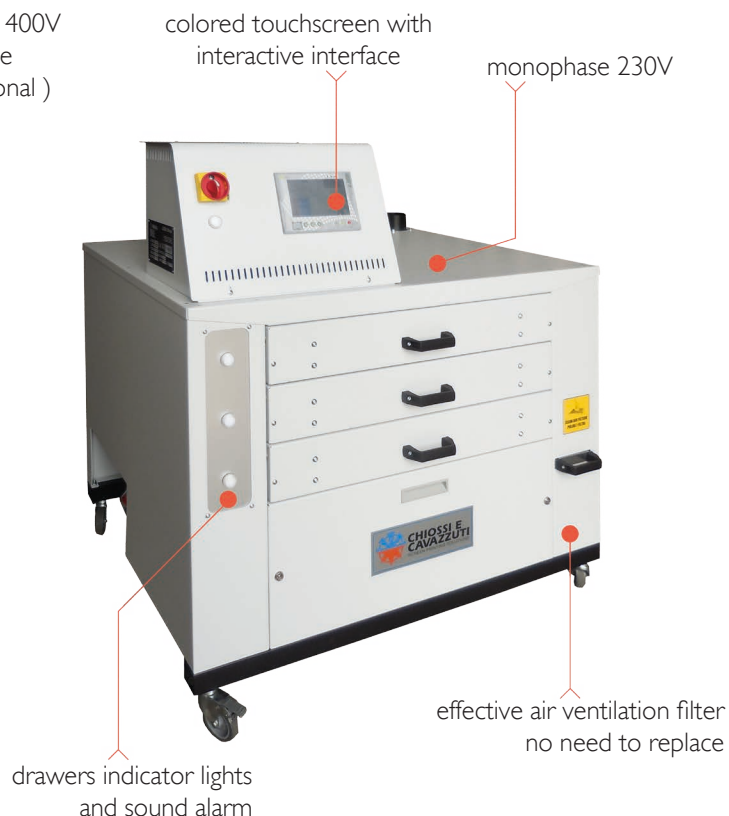
² Dimension can change accordingly to inlet or outlet extensions



DiDo 6 Drawers



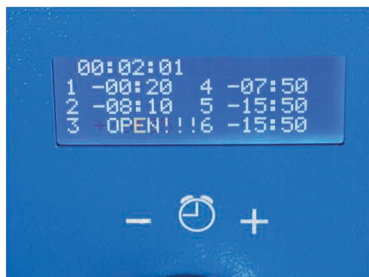
DiDo Shop 3 Drawers



Features

The DiDO dryer has been designed to dry water-based, digitally printed inks. The DiDo Shop is supplied by 230V monophase.

- It works very well with medium-long drying process thanks to the control of the temperature and its efficient air circulation: for this reason it's perfect for fine fabrics like Lycra, wool, silk and flocked garments.
- DiDO is ideal for small factories, laboratories and shops thanks to its reduced dimensions and low consumption.
- Hourly production is approximately 60 garments (30 for DiDO Shop) with a permanence of 5-6 minutes per drawer.
- Suitable for any type of digital machines, its maximum working temperature is 180°C.
- The air is warmed by electrical heating elements and blown in a vertical convection current in order to be uniform everywhere. More so the filtered air keeps the fan and the conduct clean, improving the efficiency and power consumption of the system. The oven is equipped with exhaust fumes pipe and an heat exchanger.
- Each drawer is independent and equipped with its own timer, indicator light and sound alarm.
- DiDO Shop dryer introduces a colored touchscreen interface, easy and interactive to use, with important new features like the automatic heating-on and switch-off of the dryer, to minimize the time lost by the operator.



DiDO Lcd display drawers timer

Advantages

- easy and interactive interface
- automatic scheduled start
- safe cooling off and sleep mode
- precise temperature control
- each drawer has its own timer
- drying process indicator light and alarm
- low consumption ideal for small business
- compact and lightweight structure
- unique and uniform air ventilation
- no need for filter replacements



DiDO Shop Interface



DiDO with 6 open drawers

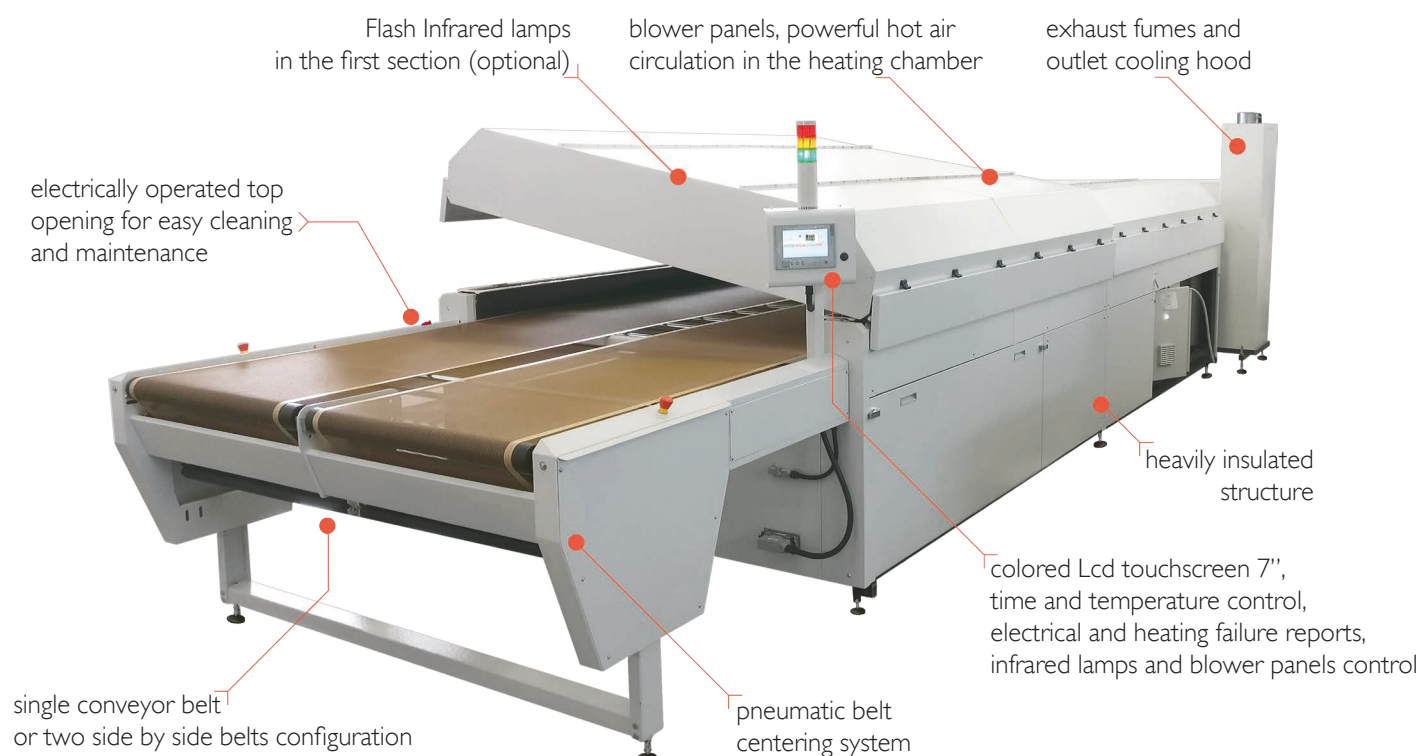


DiDO Shop with T-shirt

TECHNICAL DATA	DIDO	DIDO Shop
Electrical Requirements	400V 3P+N+PE 13 A	230V 1P+N+PE 16 A
Exhaust Specification	200 m³/h Ø 80 mm	40 m³/h Ø 80 mm
Power Consumption (max)	9,2 kw	3,7 kw
Max Temperature	180°C	160°C
Drawer Size [mm]	700x700x70	700x680x70
Production ¹	60 pieces/h	30 pieces/h
Dimension (LxWxH) [mm]	1068x984x1425	1184x832x1202
Shipping Weight	250 kg	210 kg
¹ Production of T-shirts with A4 print size - 6 minutes curing time		



Forced hot Air Gas Dryers



Features

"Griff" is the tunnel dryer with the highest air circulation of its kind. The gas heating has been chosen to reduce energy costs.

- It is designed to dry and cure fabrics printed with digital printers using water-based inks.
- The hot air circulation is particularly accurate and use reversed blades fans, with high efficiency and low noise.
- The air exchange is calibrated to expel water vapor and combustion fumes and facilitate drying.
- The outflow nozzles send the air onto the product in a perpendicular and high speed way.
- The temperature is regulated by a precision thermostat that drives a modulating premixed burner.
- The flame is always present and its intensity varies in function of power demand.
- The passage height is 130 mm, sufficient for the vast majority of products.
- The two independent belt speeds version can dry simultaneously two products with different drying time.
- It is possible to lift the upper section electronically to easily perform the internal cleaning of the dryer.

Optionals

- Inlet and outlet extensions
- IR heating with flash lamps in the first meter of the heating chamber



Exhaust fumes and outlet cooling hood

Advantages

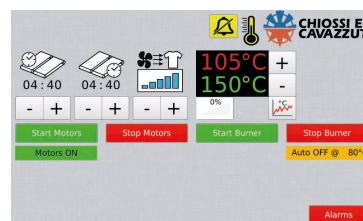
- new interactive interface
- optional combined drying system
- highest speed of hot air circulation
- powerful airflow specifically designed for DTG
- precise time and temperature control
- low consumption and efficient burner
- optional flash infrared lamps



Infrared Lamps and upper section opening



Single belt configuration



Griff PLC interface

Other models and configurations are available

New
2018

TECHNICAL DATA	GRIFF 4140	GRIFF 5180
Electrical Requirements	400V 3P+N+PE 4,8 A	400V 3P+N+PE 5,1 A
Exhaust Specification	1500 m³/h Ø 200 mm	1500 m³/h Ø 200 mm
Max Temperature	200°C	200°C
Power Consumption (max)	2,5 kw	3,2 kw
Burner Power	40 kw	40 kw
Belt Width [mm]	1440	1800 or 2x900
Chamber Length [mm]	4000	5560
Production ¹	600 pieces/h	800 pieces/h
Dimension ² (LxWxH)[mm]	6976x2150x2033	8665x2250x2100
Shipping Weight	1800 kg	2300 kg
¹ Production of T-shirts with A4 print size - 3 minutes curing time		
² Dimension can change accordingly to inlet or outlet extensions		

Electric or Gas Modular Dryers



Features

The Fahrenheit Dryer is designed to rapidly dry any kind of ink from a minimum temperature of 100°C up to a maximum of 200°C.

- Available in various sizes, this dryer forms a modular structure and adds new modules to adapt to various production requirements.
- Provided with an extractor fan and hood located at both sides of the dryer for the expulsion of fumes and vapors of the process.
- Equipped with internal diagnostics to detect malfunctioning and faults, if any.
- Height adjustment of the hot air emission surfaces from 50 to 140 mm.
- Forced air recirculation system designed to make the preset temperature uniform.
- Protective filters to keep the fans and ducts clean and ensure efficiency over time.
- Provided with pneumatic system for belt centering and tensioning.
- Belt speed and temperature are adjustable directly on control panel.
- Designed to dry both Plastisol and water-based inks.
- Powered by Gas or only by electricity.

Optionals

- Inlet and outlet extensions
- Outlet cooling system

Chiossi e Cavazzuti s.r.l.

Via Costituzione 50/D 42015 Correggio (RE) Italy - tel. +39 0522 637224 fax. +39 0522 631180 - cc@chiossiecavazzuti.com - www.chiossiecavazzuti.com

Configurations

Heating Chamber Length: from 4, 6, 8 to 10 meters

Heating Chamber Width: 1100 - 1600 - 1800 mm

Fahrenheit Gas 8180

Curing Area: 8000x1750 mm

Power consumption: 7,8 kw

Production: 800 pieces/h



Fahrenheit Electric 6160

Curing Area: 6000x1550 mm

Power consumption: 49 kw

Production: 600 pieces/h



Other configurations available: Fahrenheit Electric 6110 (6000x1100mm), Fahrenheit Electric 8160 (8000x1600mm), Fahrenheit Gas 10180 (10000x1800mm), etc.

TECHNICAL DATA	ELECTRIC FAHRENHEIT 4110	ELECTRIC FAHRENHEIT 6160	GAS FAHRENHEIT 6180	GAS FAHRENHEIT 8180
Electrical Requirements	400V 3P+N+PE 38 A	400V 3P+N+PE 75 A	400V 3P+N+PE 17,5 A	400V 3P+N+PE 22 A
Exhaust Specification	600 m³/h Ø 300 mm	800 m³/h Ø 300 mm	2000 m³/h Ø 300 mm	4000 m³/h Ø 300 mm
Power Consumption (max)	26 kw	49 kw	6,8 kw	7,8 kw
Max Temperature	200°C	200°C	200°C	200°C
Belt Width [mm]	1050	1550	1750	1750
Chamber Length [mm]	4000	6000	6000	8000
Production ¹	400 pieces/h	600 pieces/h	650 pieces/h	800 pieces/h
Dimension ² (LxWxH)[mm]	6000x1550x1620	9000x2300x1700	9000x2500x2350	11000x2500x2350
Shipping Weight	1200 kg	2000 kg	3000 kg	3700 kg

¹ Production of T-shirts with A4 print size - 3 minutes curing time

² Dimension can change accordingly to inlet or outlet extensions

Infra-Red Radiant Panels Dryers



Features

The NOIR dryer is a high speed product designed for the rapid drying process of plastisol inks on fabrics.

It has the following performance features:

- Precise electronic temperature regulator which acts directly on radiant panel temperature
- High quality drying thanks to its special radiant panels which guarantee no drying quality differences for light or dark colors
- Conveyor belt speed is regulated by a mechanical variable speed control with an extensive speed range which limits its maintenance
- Perfect belt alignment thanks to an air-operated centering device and tensioning system that automatically compensates any stretch
- Tunnel height can be adjusted to position the radiant panels at will and thus optimize drying performance
- Cladding panels are perfectly insulated by adopting special technical measures and excellent quality materials
- The outer surface always remains at ambient temperature, thereby reducing dispersion of heat
- Provided with extraction fan for expulsion of fumes from the process

Optionals

- Forced hot air system to dry water-based inks
- Increase working height to 300mm inside the tunnel
- Inlet and outlet extensions
- Outlet cooling system



Noir 3750 with combined hot air drying system and heating chamber height increased to 300mm

Configurations

Noir 2500

Curing Area: 2500x1050 mm

Power: 15,5 kw

Production: 450 pieces/h



Noir 3750

Curing Area: 3750x1050 mm

Power: 20,5 kw

Production: 680 pieces/h



Noir 5000

Curing Area: 5000x1050 mm

Power: 32 kw

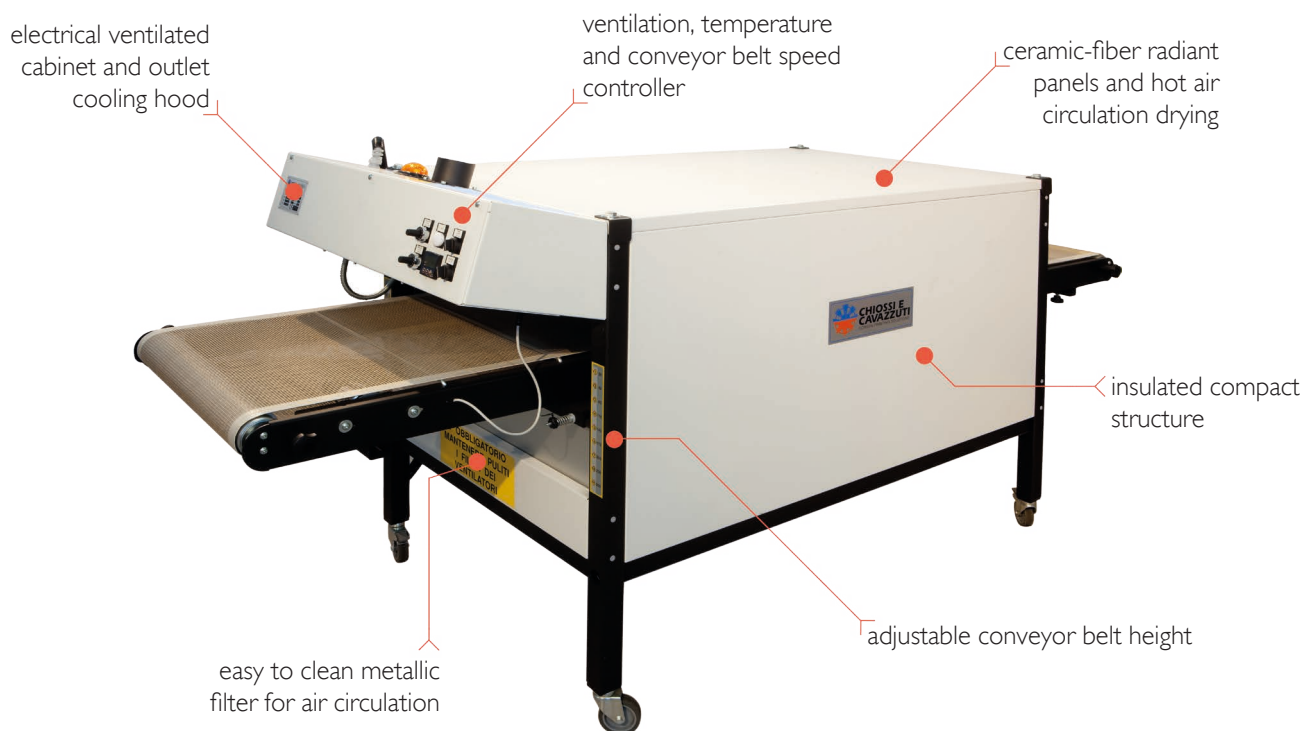
Production: 900 pieces/h



Other configurations are available on demand

TECHNICAL DATA	NOIR 2500	NOIR 3750	NOIR 5000
Electrical Requirements	400V 3P+N+PE 25 A	400V 3P+N+PE 31 A	400V 3P+N+PE 50 A
Exhaust Specification	600 m³/h Ø 125/200 mm	600 m³/h Ø 125/200 mm	1200 m³/h Ø 125/200 mm
Max Temperature (IR Panels)	550°C	550°C	550°C
Power Consumption (max)	15,5 kw	20,5 kw	32 kw
Belt Width [mm]	1050	1050	1050
Chamber Length [mm]	2500	3750	5000
Production ¹	450 pieces/h	680 pieces/h	900 pieces/h
Dimension ² (LxWxH)[mm]	4500x1380x1640	5750x1380x1640	7000x1380x1640
Shipping Weight	660 kg	900 kg	1200 kg
¹ Production of T-shirts with A4 print size - 1,5 minutes curing time ² Dimension can change accordingly to inlet or outlet extensions			

Electric Radiant Panels Dryer



Features

The dryer "Piccolo" is a high quality product, designed to dry inks printed on fabric, both Plastisol and water-based.

- The dryer reaches the operating temperature in a few minutes thanks to its lightweight and compact structure.
- Three ceramic fiber radiant panels, combined with hot air circulation, plus two infra-red side lamps (optionals).
- Limited risk of damaging the fabrics, thanks to the kind of wave-length, which heats dark and light colors almost in the same way.
- The temperature can be regulated with precision, due to a feeler which measures the temperature on the radiating panel.
- The ventilation speed is adjustable, in order to homogenize the temperature and respect delicate materials.
- A blow of fresh air cools the products going out of the furnace and avoids that they deform or stick to one another.
- Toothed track system to change the height of the tunnel in 9 position, ranging 20 to 260mm of distance from the radiant panels.
- It is provided with a cooling hood at the dryer outlet and extractor fan for the expulsion of exhaust fumes.
- A filter with stainless steel net, easy to remove and clean, protects the air mixing fan.
- Optional lateral lamps to dry products on the side.

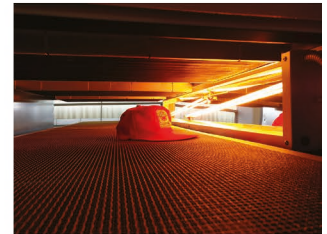
Optionals

- Optional side Lamps



Advantages

- dry both Plastisol and water-based
- both radiant-panels and hot-air curing system
- precise temperature and ventilation control
- 9 conveyor belt distances, from 20mm to 260mm
- middle-waves radiations dry dark and light garment the same way
- provided with cooling hood, fumes extractor and metallic mesh filter
- a built-in draft tube removes the bad smells of the inks
- low consumption ideal for small business
- compact and lightweight structure
- unique and uniform air ventilation



TECHNICAL DATA	PICCOLO
Electrical Requirements	400V 3P+N+PE 11 A + 3,5 A for each optional lamp
Exhaust Specification	200 m³/h Ø 80 mm
Max Temperature	200°C
Power Consumption (max)	7250 W + 2300 W for each optional lamp
Belt Width [mm]	600
Chamber Length [mm]	1500
Production ¹	200 pieces/h
Dimension (LxWxH)[mm]	2700x900x1220
Shipping Weight	200 kg
¹ Production of T-shirts with A4 print size - 1,5 minutes curing time	

Yo-Yo

This product is composed by a motor-operated base and a sliding radiant heater.

It is the ideal choice for business enterprises where the current available is limited.

- It operates with photocell, start pedal or start cable connected directly to the machine.
- The power can be adapted to avoid damage to delicate fabrics.
- The position of the radiant heater can be adjusted from the control panel and it works without mechanical limit switches.
- The speed of the slide is adjustable. The standard run of the radiator is 1000 mm.
- It is possible to select between one, two or multiple drying run on the surface.
- The printed surface remains free in order to check the actual drying process.
- The powerful air circulation facilitates the drying of all kinds of ink.
- The printing tables are less stressed by heat, thus reducing the risk of deformation.

Optionals

- Radiant Heater format 280 mm 3000 W
- Radiant Heater format 420 mm 4500 W
- Radiant Heater format 600 mm 6000 W
- Radiant Heater format 700 mm 6000 W
- Photoelectric cell starting controller
- Foot switch



Spot Easy

The Spot Easy is a high quality product designed to dry screen printed inks on fabrics to allow overprinting. Thanks to the use of 9 medium wave Tungsten lamps and reflectors with optimized design, the inks dry fast, perfectly and its easy to use.

Spot Easy XL version has 14 lamps with a total radiated area of 500x700mm.

- Cheap Flash Cure with a thin design, versatile and perfect for small printed areas.
- The risk to damage the material is minimized, thanks to the type of lamp used, which heats both light and dark inks indifferently.
- The heating is carried out by "pulsar" type infra-red lamps which provide excellent results, ensure low consumption and long life.
- Each lamp has a luminous switch in order to operate only with the required heat.
- Two fans provide ventilation of the components and contribute to the drying process.
- The lamps are switched-on by electronic components, without noise and wear.

Optionals

- Photoelectric cell starting controller
- Foot switch



Magic

This product is particularly suitable to operate with modern, automatic printing machines. It is very easy to use and guarantees low operating costs and an excellent performance. A professional product for the professionals in the printing industry.

- Heating is provided by super-quick start-up lamps with vacuum-filled tungsten filaments, a special feature increasing life and improving start-up time.
- The optical infrared thermometer reads the ink temperature instantly and stops the heating when the preset temperature has been reached, thus preventing the fabric from burning. If temperature control cannot be used, traditional timing control is still available.
- The powerful air circulation ensure high quality curing of any kind of ink.
- Magic offers various types of starting action (mechanical or electronic), and also send a signal to the printing machine notifying the drying stage to be perfectly synchronized.

Magic 25 can be installed directly on the printing machine and operate in synchrony



temperature and time control >

super quick start-up infra-red lamps >

optimal airflow and uniform curing distribution >

suitable for all printing station and all types of ink >



Other models available: Spot Easy XL, Magic 7000

TECHNICAL DATA	Magic 25	Magic 5000	Spot Easy	Yo-Yo 700
Electrical Requirements	400V 3P+N+PE 19 A	400V 3P+N+PE 13 A	400V 3P+N+PE 13 A	400V 3P+N+PE 9 A
Power Consumption (max)	12 kw	9 kw	6 kw	6,1 kw ²
Curing Area [mm]	600x420	500x500	420x450	700x1000
Working Height [mm]	adaptable	850 - 1050	860 - 1125	850 - 1050
Number of Lamps	12	9	9	radiant heater ²
Size (L x W x H ¹) [mm]	630x510x260	1080x585x1250	980x580x1250	1462x515x1340
Shipping Weight	18 kg	50 kg	43 kg	44 kg

¹ Overall height may change accordingly to support adjustments

² Radiant heater available in various size: 280mm 3000W - 420mm 4500W - 600mm 6000W - 700mm 6000W

The data in this document was valid at the time of publishing, and is subject to change without notice. Chiossi e Cavazzuti srl reserves the right to modify its products and change their specifications at any time, without prior notice and further obligation. It is forbidden without prior authorization from Chiossi e Cavazzuti srl to copy, modify, alter, publish, distribute, sell or transfer this material. All rights reserved.

Folding and Packaging Machine



Features

The SPEEDY-T is a folding and semi-automatic packaging machine. This product is indispensable for a fast and uniform folding of T-shirts, sweaters, hoodies and other garments. The blades are interchangeable, very easy to adjust and adapt the fold to the required size, changing in few seconds the set-up from baby t-shirts to extra large sizes. The factors of its success are the reliable fold quality combined with its heavy-duty production capability. It can be adapted to suit all shapes and sizes available on the market.

SPEEDY-T can operate in two ways:

- stacking mode: each folded garment is placed on the stacker, which descends automatically; a photocell indicates when the stack is at its maximum load and stops the machine.
- packaging mode: at the end of each cycle the garment remains on the last blade, which is lifted up, and it can be packed in a bag.

The electronic control device allows the following functions:

- 10 folding programs
- customization of folding programs
- self-diagnostics of anomalies and faults
- production count and report when has reached the preset number of pieces
- hourly production programming with acoustic signal for productions below minimum threshold setting
- multilingual selection (Italian, French, English, Spanish, German)
- reset function



Stacker Mode with automatic photocell

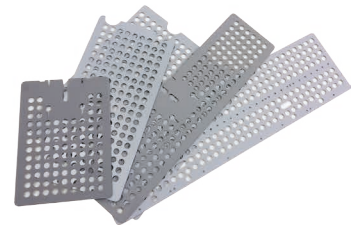
Packaging Mode with ergonomic lifting blade



easy to use with foot pedal or start button

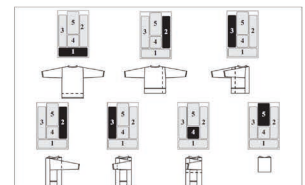
adapt various blade size to garment requirements

fold XS to XXL, long sleeved, with hoodie



customize on demand folding programs

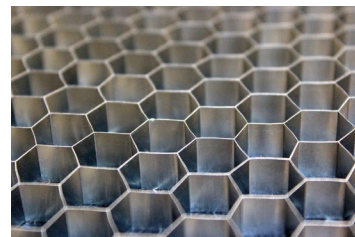
automatic self diagnostic and production count



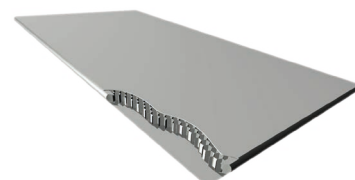
TECHNICAL DATA	Speedy-T
Electrical Requirements	230/110V 1P+N+PE 50/60 Hz
Air Specification	50 l/min 6 bar
Power Consumption (max)	230 W
Production with packaging	350 pieces/h
Production with stacker	500 pieces/h
Garment Size (min/max)[mm]	150x180 / 350x400
Dimension (LxWxH) [mm]	1500x710x815
Shipping Weight	90 kg

Honeycomb Aluminium Pallets

The Alluplan pallet series are produced using aerospace quality materials with high mechanical and thermal resistance.



These Printing tables are made of honeycomb lightweight aluminium resistant to solvents and heat resistant up to 100 °C, without undergoing deformation.



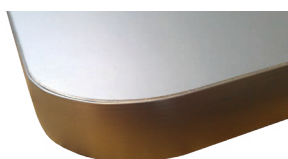
Thanks to the lightness of the Alluplan tables, the inertia on the rotary motion of the machine is reduced, thus improving performance and increasing life of the products.

The pallets are also extremely easy to handle, compared to traditional ones, and make the assembly and disassembly processes easy to achieve with every printing machine.

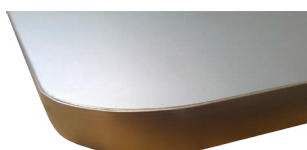


The material of the frame can be either aluminium or Pvc, to fulfill each specific production requirement.

Aluminium (22mm)



Aluminium (15mm)



Grey PVC (15mm)



Black PVC (15mm)



Custom Made on Demand



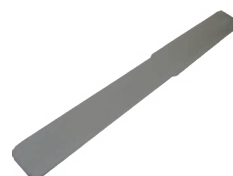
The Printing Table you need:
choose the shape, size, thickness
and fittings for your printing machine.



Made according to Customer requirements in
order to guarantee better adaptability of the
surfaces to the type of job required.



Large range of fittings for fixing to all kinds of
printing machines, both screen and digital.



Printing Tables for Digital Printing Machines, provided with garment locking frame



Manual Printing Machine Accessory:

The Printing Table "CAPS" is specifically designed to screen
print on curved objects like caps or bags.

It can be micro adjusted on both the base of the pallet and
the frame. Furthermore a spring tensor tighten the product to
achieve the highest print quality.

Printing Area: 150x90mm



ABOUT US

**“A TYPICAL COMPANY IN THE EMILIA REGION
WHOSE KEY TO SUCCESS LIES IN ITS PROFESSIONAL
SKILL AND ADVANCED TECHNOLOGY”**

Chiossi e Cavazzuti was founded in **1979** at Carpi (Modena) as a producer of dryers (paper, PVC sheets and textiles) and it soon branched out into all that concerns the screen printing industry.

At the beginning only three people were working in the company.
After 35 years of activity, the factory has more than 25 employees with several suppliers and professionals that are working mainly for its business, steadily growing each year.

In **1988**, the Company moved to Rio Saliceto (RE) in a 1.700 square meters building, to satisfy the demands of a constant and unexpected growth in production.

In **1993**, experience and technological innovation led to designing the first special lamp specifically meant for the bodywork sector, with the aim of providing an alternative to the Anglo-Saxon and Scandinavian monopoly. Advanced technical study and a well equipped factory are the strong points in the manufacture of exclusive and well made lamps which were an immediate success at the Autopromotec exhibition in 1995.

Since then, the Company has constantly maintained its objectives of quality and reliability, guaranteeing functional products designed in compliance with the latest safety standards.

In addition to the line of products meant for screen printing sector and car bodywork sector, a new line was introduced meant for the embroidery sector. The result was the innovative **Speedy-T**, a machine capable of folding and packing clothing items in bags with considerable savings in terms of time and money, thus solving the problems of an increasingly demanding clientele.





In **2007**, the Company moved again, this time to Correggio (RE), to a new industrial building (3.000 square meters) to support the current logistic and production requirements.

With approximately **6.000 customers, 40 International and 20 Italian distributors**, our brand is a well known protagonist in the screen and digital printing global market. Our website **www.chiossiecavazzuti.com** receives every day from 150 to 200 new visitors.

Today, the Company maintains close contact with those whose activities revolve around Chiossi e Cavazzuti's machines, and handles the After-sales Service directly, in order to follow and satisfy the technical and production requirements of the present and the future.



Chiossi e Cavazzuti factory in Correggio (RE), located in the heart of the Emilia region



Chiossi e Cavazzuti's
production factory,
logistic and sales offices,
sited in Correggio (RE) Italy.

Each step of the manufacturing
process is carried out in Italy,
with Italian and European
components, according to
the highest safety and quality
standards.



The Company was founded in 1979 as a producer of dryers
(paper, glass, PVC sheets and textile) and it soon branched out
into all that concerns the printing industry.



CHIOSSI E CAVAZZUTI S.R.L.

Via Costituzione 50/D - 42015 Correggio (RE) Italy

P.iva 01357650355 - C.f. 00863610366

Tel: +39 0522 637224 - Fax: +39 0522 631180

Email: cc@chiossiecavazzuti.com



WWW.CHIOSSIECAVAZZUTI.COM

visit our website to see the complete range of products and request an offer