

Honeycomb Aluminium Pallets “Alluplan”

The Alluplan pallet series are produced using aerospace quality materials with high mechanical and thermal resistance.

These printing tables are made of honeycomb lightweight aluminium resistant to solvents and heat up to 100 °C without undergoing deformation.

Thanks to the lightness of the Alluplan pallets, the rotary motion inertia of the machine is reduced, thus improving performance and increasing lifetime of the equipment.

The pallets are also extremely easy to handle, compared to traditional ones, and make the assembly and disassembly processes easy to achieve with every printing machine.



TECHNICAL DATA	VALUES
Dimension	On demand
Material	Honeycomb Aluminium
Specific Weight	10 kg/m ²
Frame Material	Aluminium / grey PVC / black PVC
Thickness	15 / 22 mm
Max Working Temperature	100°C
Printing Machines Compatibility	Large range of fixing attachments for all kind of screen printing and digital machines (MHM, MR, ROQ, SCHENK, TEKIND, HEBBECKER, ANATOL, KORNIT, POLYPRINT, etc.)



The material of the frame can be either aluminium or Pvc, to fulfill each specific production requirement.

Aluminium (22mm)



Aluminium (15mm)



Grey PVC (15mm)



Black PVC (15mm)



Main Application: Screen Printing and DTG

Pallets Made on Demand



The printing pallets you need:
choose the shape, size, thickness
and fittings for your printing machine.



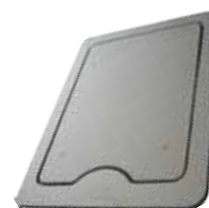
Made according to Customer requirements
in order to guarantee better adaptability of
the surfaces to the type of job required.



Large range of fittings for every brand of
printing machines, both screen and digital.



Printing pallets for digital printing machines, provided with garment locking frame



Manual Printing Machine Accessory:

The Printing pallet "CAPS" is specifically designed
to screen print on curved objects like caps or bags.
It can be micro adjusted on the base of the pallet
and the frame. A spring tensor tighten the product
to achieve the highest print quality.

Printing Area: 150x90mm

